

# HPT43

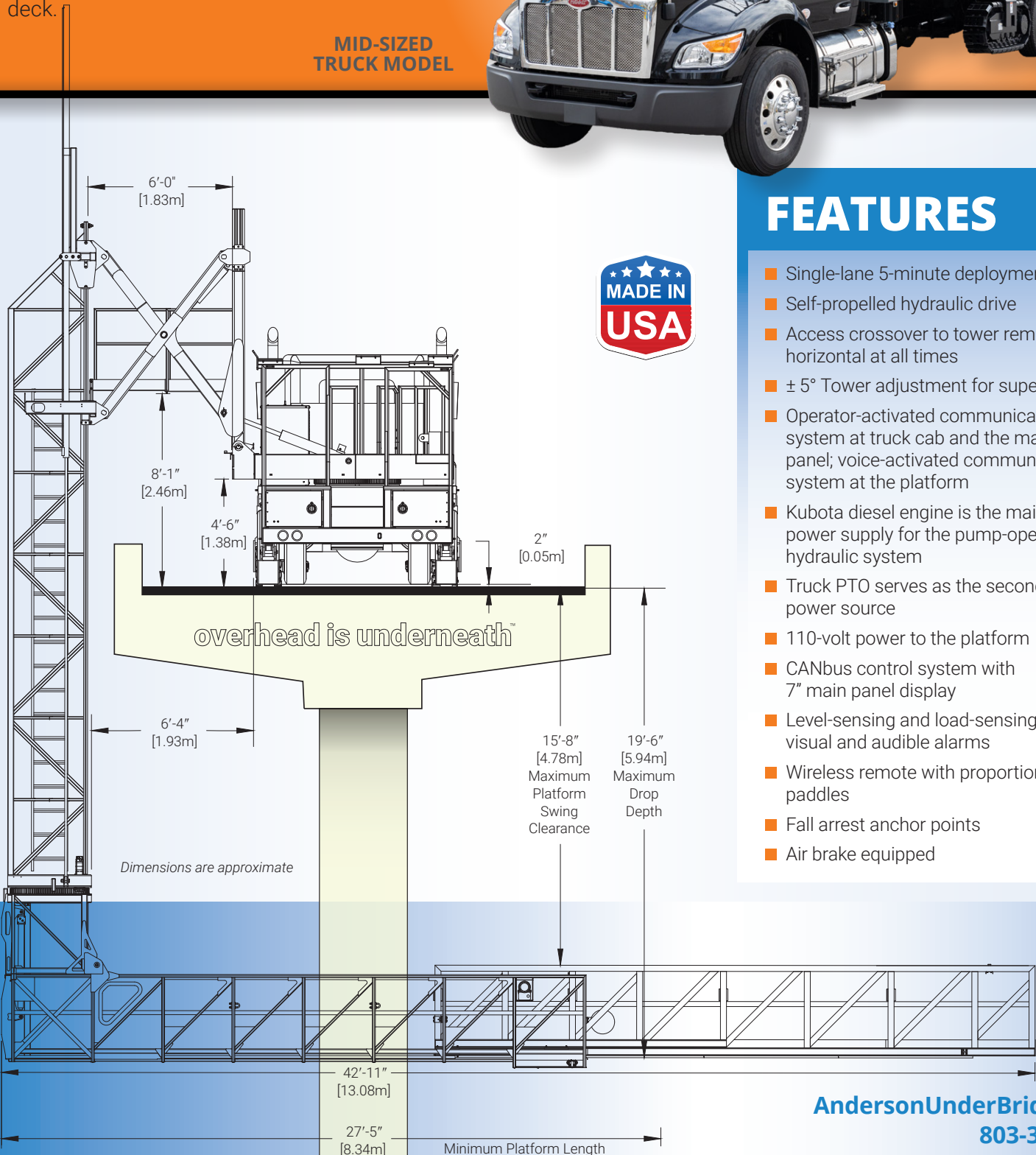
The HPT43 has an extended platform length of 43 ft. and provides more than 1,700 sq. ft. of under-bridge area from fixed point on the bridge deck.

MID-SIZED  
TRUCK MODEL



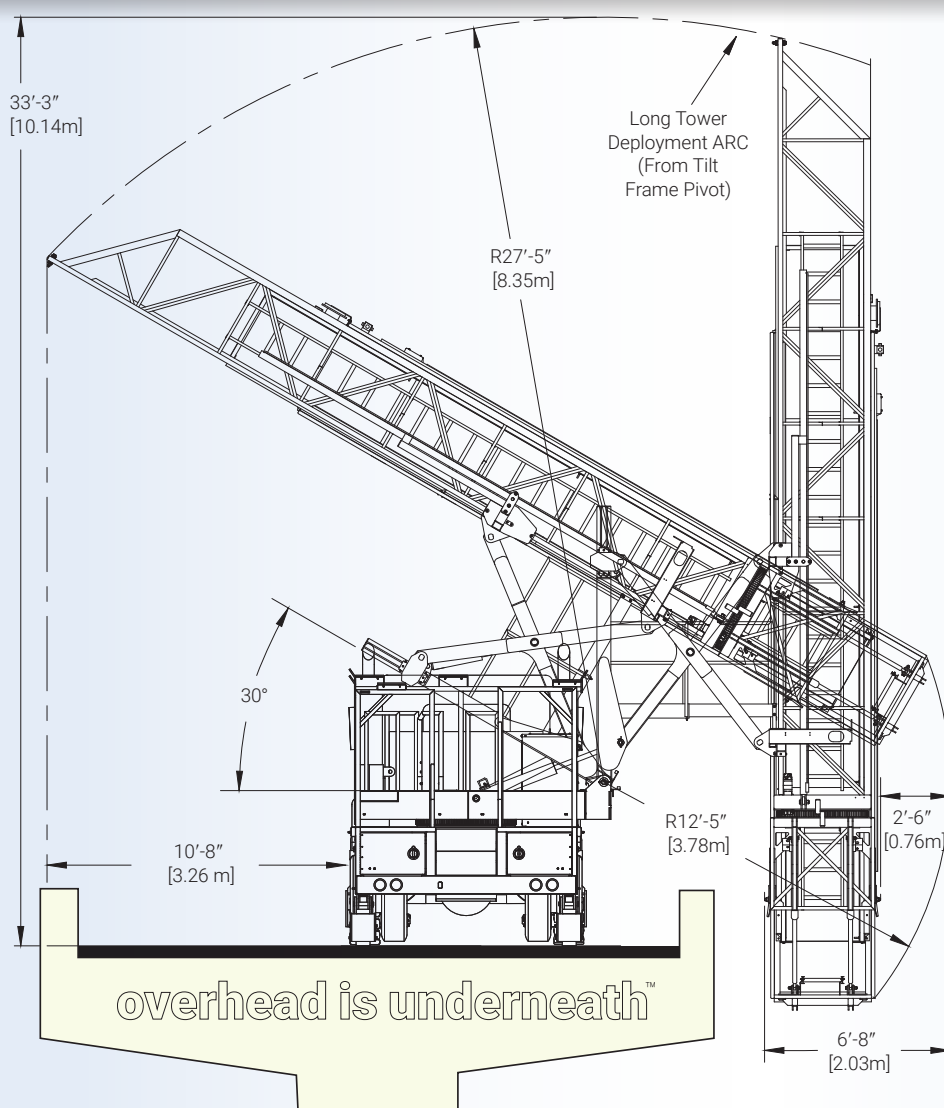
## FEATURES

- Single-lane 5-minute deployment
- Self-propelled hydraulic drive
- Access crossover to tower remains horizontal at all times
- $\pm 5^\circ$  Tower adjustment for super elevation
- Operator-activated communication system at truck cab and the main control panel; voice-activated communication system at the platform
- Kubota diesel engine is the main power supply for the pump-operated hydraulic system
- Truck PTO serves as the secondary power source
- 110-volt power to the platform
- CANbus control system with 7" main panel display
- Level-sensing and load-sensing with visual and audible alarms
- Wireless remote with proportional paddles
- Fall arrest anchor points
- Air brake equipped



when overhead is underneath™

# HPT43



Dimensions are approximate

## OUR PATENTED TOWER SEPARATION SYSTEM

Enables operators to erect and extend the tower and platform over sidewalks and other barriers without restricting under-bridge operations.

## SPECS

SPECS	US	METRIC
Platform Length	42ft-1in	13.08m
Platform Width – I.D. Alum.	2ft-7in	.79m
Platform Width – I.D. Steel	3ft-1in	.94m
Crossover Height Clearance	8ft-4in	2.46m
Maximum Lowering Depth	19ft-6in	5.94m
Tower Separation Width	6ft-0in	1.83m
Total Weight (Approximate)	45,000lbs	20,412kg
Platform Weight Capacity	1,400lbs	635kg
Platform Rotation	180°	
Maximum Grade	4.5° (7.8%)	
Maximum Super Elevation	5° (8.75%)	
Standards Compliance	ANSI A92.20	
TRAVEL POSITION SPECIFICATIONS		
Unit Length	38ft-11in	11.85m
Unit Width	8ft-6in	2.59m
Unit Height	13ft-4in	4.06m

## 180° PLATFORM ROTATION

